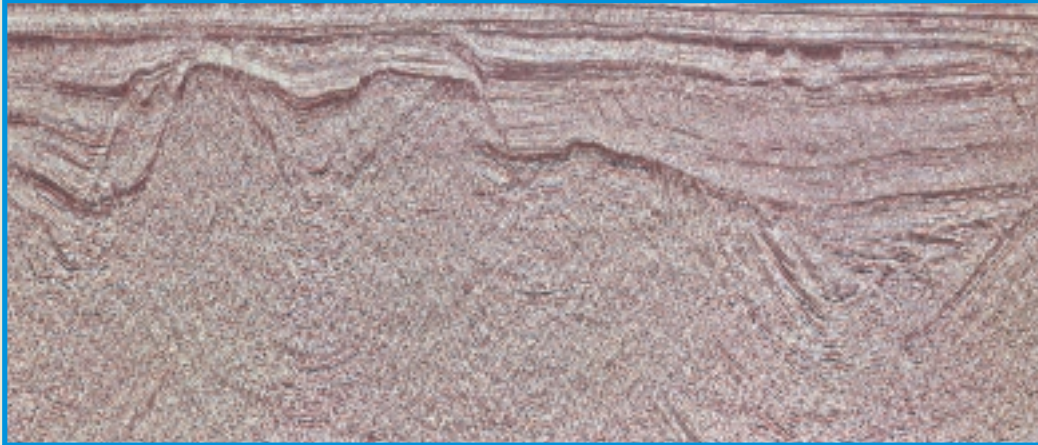
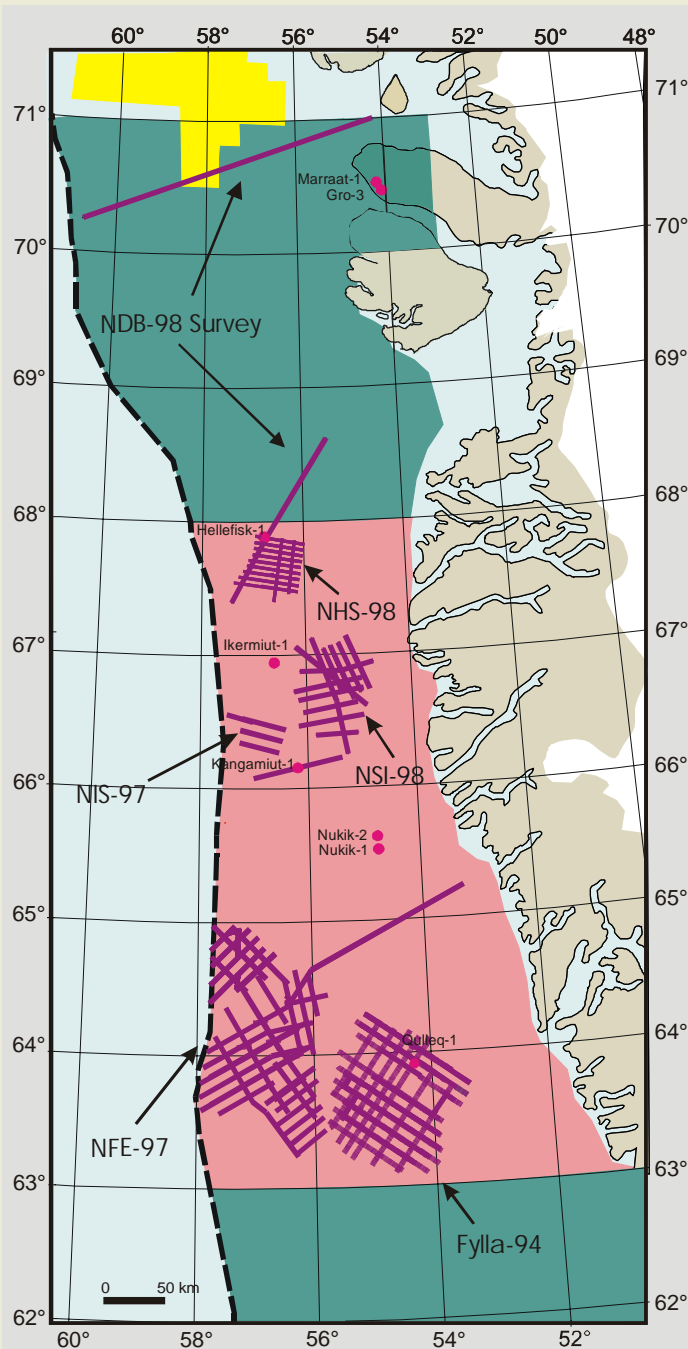


NUNAOIL Area Promotion

Nunaoil Speculative seismic data – All six surveys 34.000 USD
 Non- Exclusive 2D seismic Surveys Southern West Greenland



5 Km



- Nunaoil lines
- Area designated for licensing round, beginning 2002
- Areas covered by the Open-Door policy
- KANUMAS Preferential area

Approx. 6000 km of seismic data to delineate prospects within the areas covered by the licensing round or by the Open-Door Procedure.

Data acquired in 1994, 1997 and 1998 using tuned airgun array (4100 cu.inch); recording to 8 sec with 2 ms sample rate with cable lengths of 3000-6000 m.

The surveys

Fylla-94	1708 km	(60 fold)
NFE-97	2115 km	(60/72 fold)
NIS-97	194 km	(60 fold)
NHS-98	534 km	(90 fold)
NDB-98	367 km	(120 fold)
NSI-98	709 km	(90 fold)



Vandsøvej 5, Postbox 579,
 DK-3900 Nuuk, Greenland

Phone: (+299) 32 87 03, Fax (+299) 32 87 04
 e-mail: nunaoil@nunaoil.gl, Web: www.nunaoil.gl